



École Barthélemy-Vimont  
415, rue Saint-Roch  
Montréal (Québec) H3N 1K2  
☎ (514) 596-4572

August 25, 2020

## **A safe and caring start to the school year together.**

Dear parents,

The entire school team is working to finalize preparations for the return to class and to welcome all students in a safe and caring manner.

This back-to-school season raises many questions, but we are confident. We are working in collaboration with Public Health (DSP) and the Centre de services scolaires de Montréal (CSSDM).

We believe that this document will provide many answers to your questions.

## **Full-time school**

All students are expected to be in class this year on a full-time basis.

## **Back to school on Thursday, August 27<sup>th</sup>**

As a reminder, here is the schedule for Thursday, August 27th. Please only one parent per child must attend in order to limit the number of people.

### Annex (630 St. Roch Street) in the yard - August 27th

Grade 2 students: 7:45 a.m.

1st grade students: 8:30 a.m.

### Barthélemy-Vimont (415 rue Saint-Roch) (at the back of the courtyard) - August 27th

2nd and 3rd grade students: 7:50 a.m.

Grade 4 students: 8:10 a.m.

Grade 5 students: 8:25 a.m.

6th grade students and combined class: 8:40 a.m.

### **Back to school for reception and language class students**

Welcome classes begin on the morning of Friday, August 28.

The language classes begin on Thursday, August 27th in pm, parents have been contacted.

### **Medical certificate**

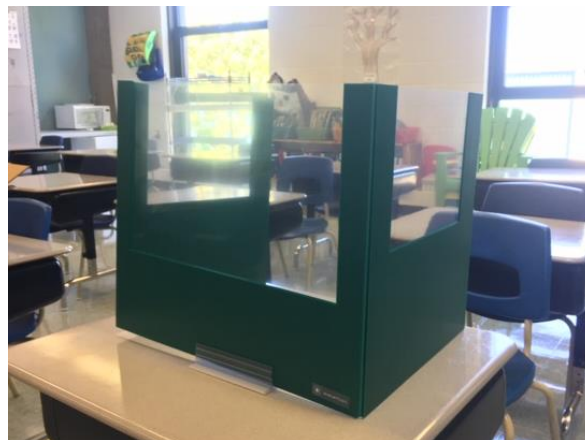
If for a medical reason (vulnerability to Covid-19) or other reasons your child cannot attend school, you must provide the school administration with a medical certificate from a doctor.

### **Means of prevention to ensure everyone's safety**

Our school has put in place many means to ensure the safety of all in this time of pandemic. You will discover them in the next pages.

### **Isolators**

Each child will have a voting booth in his or her class. We have them in all colors. This booth allows the child to concentrate, to regain calm when necessary and also provides extra protection. It is an initiative of the school, the government does not impose this means.



### **Coordination of student outings at the end of classes**

We are numerous at the head office (415 rue Saint-Roch). In order to avoid having too many students in the playground at lunch time and after school, the students of the head office will go out in the playground at the following hours:

#### **Classes leave for lunch (415 rue Saint-Roch)**

11:22 a.m.: Grades 5, 6, welcoming (806, 807, 808, 809)

11:24 a.m.: Year 2, 3, Welcome (802, 803)

11:26 a.m.: Grade 4 welcome (804, 805)

### **Afternoon class outing (415 rue Saint-Roch)**

3:12 p.m.: Grades 5, 6, welcome classes (806, 807, 808, 809)

3:14 p.m.: Grade 4 welcome classes (804, 805)

3:16 p.m.: Year 2, 3, welcome classes (802, 803)

Special attention will also be paid by the Annex team to ensure that the students' exit is as safe as possible.

It is possible that adjustments will be made in the coming days.

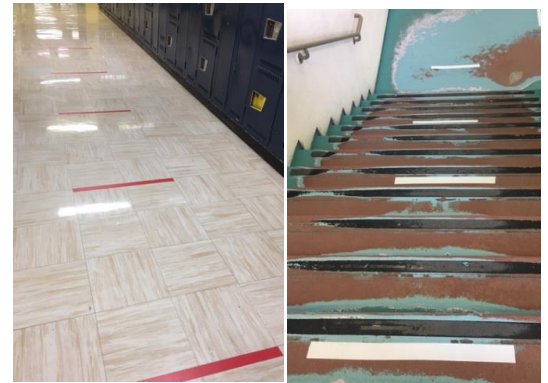
**It will be important for parents (and children) to leave the school area quickly after picking up their child.**

### **Distance measurement in classrooms (desks)**

There will be a distance of one meter between each desk in the classrooms. This is an additional option that the school offers itself; the government does not impose this option. There will be little common material used between students (this will be exceptional). When there is sharing, hands will be washed and equipment disinfected.

### **Distancing in travel**

Physical distance measurements of one meter between class groups of students and two meters with adults will be respected, whether the activities take place outdoors or indoors. Ribbons have been installed on the floor and on the stairs to encourage distance between students and staff.



There will be one-way travel in the Annex and various adaptations in the corridors of the two buildings to reduce encounters between students in different groups.

## Hand cleaning

Strict hygiene and sanitation measures are in place in our two pavilions. Children will clean their hands several times during the day:

- at the school entrance - before and after each break - before and after eating food - after blowing their noses - after going to the bathroom
- on leaving school - on entering the classroom when a specialist returns from school

Several water points have been added in the two school buildings.

We will alternate between the use of gel (given by the adult) and soap. We will observe the sensitivity of the children for the products used.

## Disinfection of classrooms and other premises

Surfaces and other frequently used objects will be cleaned and disinfected regularly in classrooms and other premises by maintenance staff and teachers. No child will be allowed to handle cleaning equipment.



## Prevention at the school entrance

Each visitor and staff member must complete a form requested by Public Health. Hands must be disinfected at the entrance.



## **Wearing the mask**

All school staff will wear masks when walking around the school and when working with students. Students aged 10 to 12 years old will wear the mask when walking around the school. Students who wish to do so may wear a mask at all times, at the discretion of the parents. The mask is provided by the parents.

## **Playground**

Each group of students will have a section to play in the playground. No group will be mixed with another group. There will be sections in the playground of both buildings. There will be a minimum distance of one meter between each group of students. There will be no sharing of materials and



between groups and students in the same group will use common materials as little as possible. We have purchased individual play sets for all students in both buildings.

## **What the children have to do before leaving home in the morning**

We will need your collaboration. Before leaving home in the morning, as much as possible your child should :

- go to the bathroom (sounds fun as a suggestion but it will reduce the amount of travel to school at the beginning of the day)
- wash their hands
- leave the house with a **reusable bottle filled with water.**

The school fountains will be used to fill the bottles.

## Morning and afternoon entrance

Special attention was paid to respect the distance between students.

At the parent house, the children will place themselves on a point when they arrive in the yard in the morning and afternoon. Annex staff will also provide supervision for distancing in the yard.

In order to avoid crowds, children should not arrive in the yard long in advance. Here is the usual schedule...

Arrival in the courtyard in the morning

7:50 a.m. for the head office (415 Saint-Roch Street)

7:45 a.m. for the Annex (630 St. Roch Street)

Arrival in the courtyard in the afternoon

12:40 p.m. for the parent company

12:35 p.m. for the Annex



## Daycare and lunch service

The lunch hour will follow the guidelines of public health authorities. Thus, the daycare and lunch service will follow the same rules as the classroom, i.e. a minimum distance of 1 meter between students in different groups. There will be no sharing of materials. Whether it is at lunch time or during morning and afternoon daycare activities, there will be distance and hand washing. We will make no distinction between the rules of the class and the operation of the daycare service. We know that our means of prevention must be respected by all.

## **School Transportation**

With the context of the Covid, there will no longer be a place of courtesy for children who do not live far enough away from school. You have here the link specifying the new orientations concerning school transportation. Given the reduction in bus capacity, the offer of transportation will be reduced, mainly for students attending their neighbourhood school. Therefore, parents who are in a position to do so are asked to provide transportation for their child in order to reduce the number of students who need to be transported. Also, it is important that parents who will no longer be using school transportation let us know as soon as possible.

## **Welcoming students and supporting our staff**

Even though the children are anxious to start school again, we know that they may have fears. All of our staff will be attentive to the needs of the students. If you have specific concerns, you can contact your child's teacher.

## **A great school year**

School is important to our youth and the benefits of returning to the classroom are real to allow them to develop and flourish. Even if this document talks a lot about means of prevention against coronavirus, all the staff will make sure that each child develops, with the pleasure of learning. I would like to take this opportunity to thank you for your understanding and to remind you that our team will be mobilized, as always, to ensure your child's learning and well-being. If you have any questions, please do not hesitate to contact me. I look forward to working with you,



**Stéphane Brunet**  
Director of l'école Barthélemy-Vimont

Annie Tremblay, Assistant Director, Head Office

Rahili Assaf, Assistant Director, Annexe

**AND THE SCHOOL TEAM**

